

[View this email in your browser](#)



~ MOCHA MOUSSE ~

**PANTONE'S COLOUR OF THE YEAR FOR
2025**

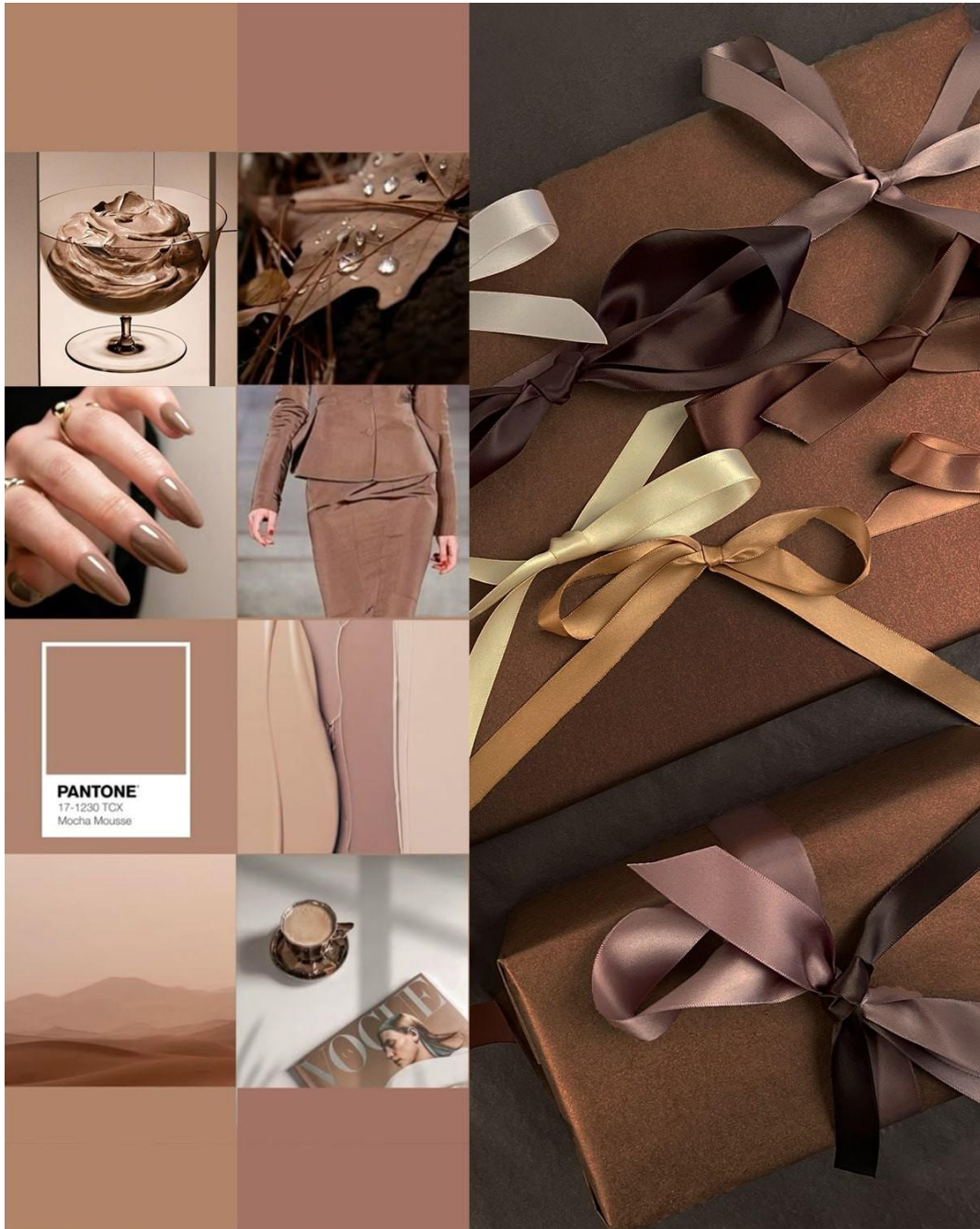


Pantone's Colour of the Year for 2025 is 'Mocha Mousse'

A warm brown hue, imbued with richness, as softened with a hint of mauve.

Sophisticated and lush, yet at the same time an unpretentious classic.

It extends our perception of the brown
from being humble and grounded to embrace luxe



This colour nurtures us with its suggestion of the delectable qualities
of chocolate and coffee, answering our desire for comfort
and the indulgences of simple pleasures
that we can gift and share with others.



Pictured below are my two favourite shades
of this 'Mocha Mousse' colour
in the DMC Stranded Cotton range of threads
~ 779 & 3860 ~



These colours look stunning on the following fabrics
(pictured from left to right)

Permin Linen - 28 count - Icelandic Beige
Belfast Linen - 32 count - Flax
Permin Linen - 28 count - China Pearl



Add either of these luxurious - on trend - colours to your next needlework project.

Three *Barberry Row* designs in which DMC 779 is used are featured below



Sherdyn's September Sampler - 2022

~
 BARB 5000
 \$ 40.00



Ackworth Flowers

~
 BARB 006
 \$ 60.00



Do What You Love

~
 \$ 25.00

To order threads, fabric or designs
request personally by email or order via the website
or visit the Heirlooms Needlework Gallery

9 Cumberland Rise
Taradale
Napier 4112

Needlework Gallery Hours : 2nd & 4th Fridays of a month
11am - 3pm
or
Other Times - By Appointment
(Please telephone, text or email to arrange a time)

Phone: 06 844 0460

Text: 027 649 8817

Email: heirlooms@outlook.co.nz

Sherelyn



Threads

Fabrics

Designs

Website

Email

Barberry Row
Needlework Designs

The logo for Barberry Row Needlework Designs features the brand name in a large, elegant cursive font. Below it, the words "Needlework Designs" are written in a smaller, simple sans-serif font. The entire text is enclosed in a thin black rectangular border. A small, detailed illustration of a branch with leaves and berries is positioned in the upper right corner of the border.



*... for fine needlework designs,
supplies & accessories
for the discerning needlewoman
to create beautiful
needlework pieces
that will become
the heirlooms of tomorrow*

Samplers - Antique Reproductions & Original Designs - Our Passion



Copyright (C) 2025 Heirlooms & Barberry Row,. All rights reserved.

You are receiving this email because you requested to receive notifications of special events or a copy of the Heirlooms newsletter or my blog ramblings when you visited the Needlework Gallery, attended a needlework retreat or submitted a form via the website. Sherelyn

Our mailing address is:
Heirlooms & Barberry Row, 9 Cumberland Rise, Taradale, Napier, 4112, New Zealand

Want to change how you receive these emails?
You can [update your preferences](#) or [unsubscribe](#)



